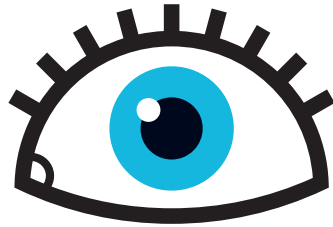
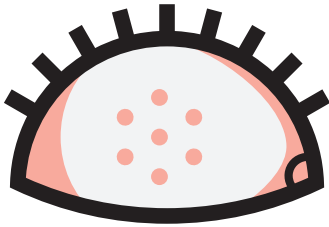


*For
professionals*



**How to handle
a conformer**

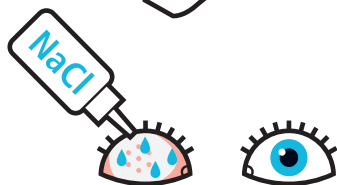
Removal of the conformer

Indicated when

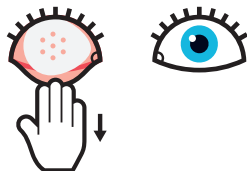
1. Wash your hands.



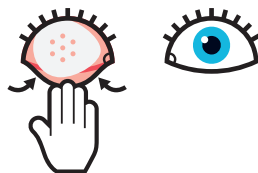
2. Clean the eyelids with physiological saline (NaCl 0.9%) and use a compress to remove possible secretions and blood residues.



3. Pull down the lower eyelid to release the conformer.



4. Slip the lower eyelid under the conformer and then remove it.

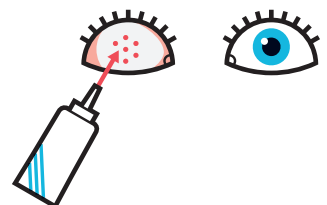
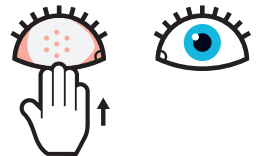
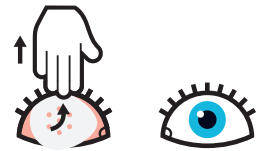
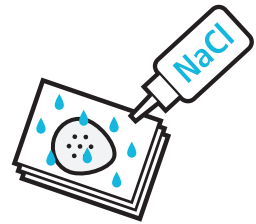
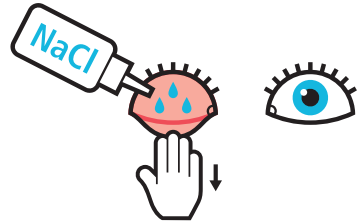


5. Place the conformer on some compresses while you clean the socket.



Nursing care of the socket

6. Rinse generously the socket with NaCl 0.9%.
7. Wash the conformer with liquid soap and rinse it.
8. Moisten the conformer with NaCl 0.9%. Use a wet compress to clean it without drying it.
9. Put back in place the conformer by first inserting it under the upper eyelid. *Note: wide side: towards the temple; narrow side: towards the nose.*
10. Reposition the lower eyelid on the conformer.
11. Apply the local treatment (ointment and/or drops) prescribed by the physician through the conformer's small holes.



What if the conformer has come out?

This is a semi-emergency !

The conformer must be put back in place as soon as possible.

To put back in place the conformer, start from point 5.

Otherwise, contact our polyclinic: **+41 21 626 83 03**

Without the conformer, the socket behind the eyelids shrinks and risks to no longer hold the future cosmetic prosthesis.

Following the operation, the swelling of the orbital tissues decreases. If the conformer keeps coming out, it may need to be replaced with a larger one.



**Hôpital ophtalmique
Jules-Gonin**

Service universitaire d'ophtalmologie
Fondation Asile des aveugles

Avenue de France 15 • Case postal 1 • 1001 Lausanne
Tél. +41 21 626 81 11 • www.ophtalmique.ch

Illustrations: Christophe Rochat d'après les dessins de Yamine Abdechakour